

Grand Challenges: Logistics

Prof Marc Desmulliez (Heriot-Watt University)
Prof Michael MacDonald (University of Dundee)



+

•



Agenda

- 1) Introduction to Tay Health Tech
- 2) Shaping the Grand Challenges – PPIE workshops
- 3) What we are, and are not, looking for
- 4) Eligibility
- 5) Review process
- 6) Finding collaborators
- 7) Q&A



+



Tay Health Tech: a PBIAA (Place Based Impact Accelerator Account)

Place-based



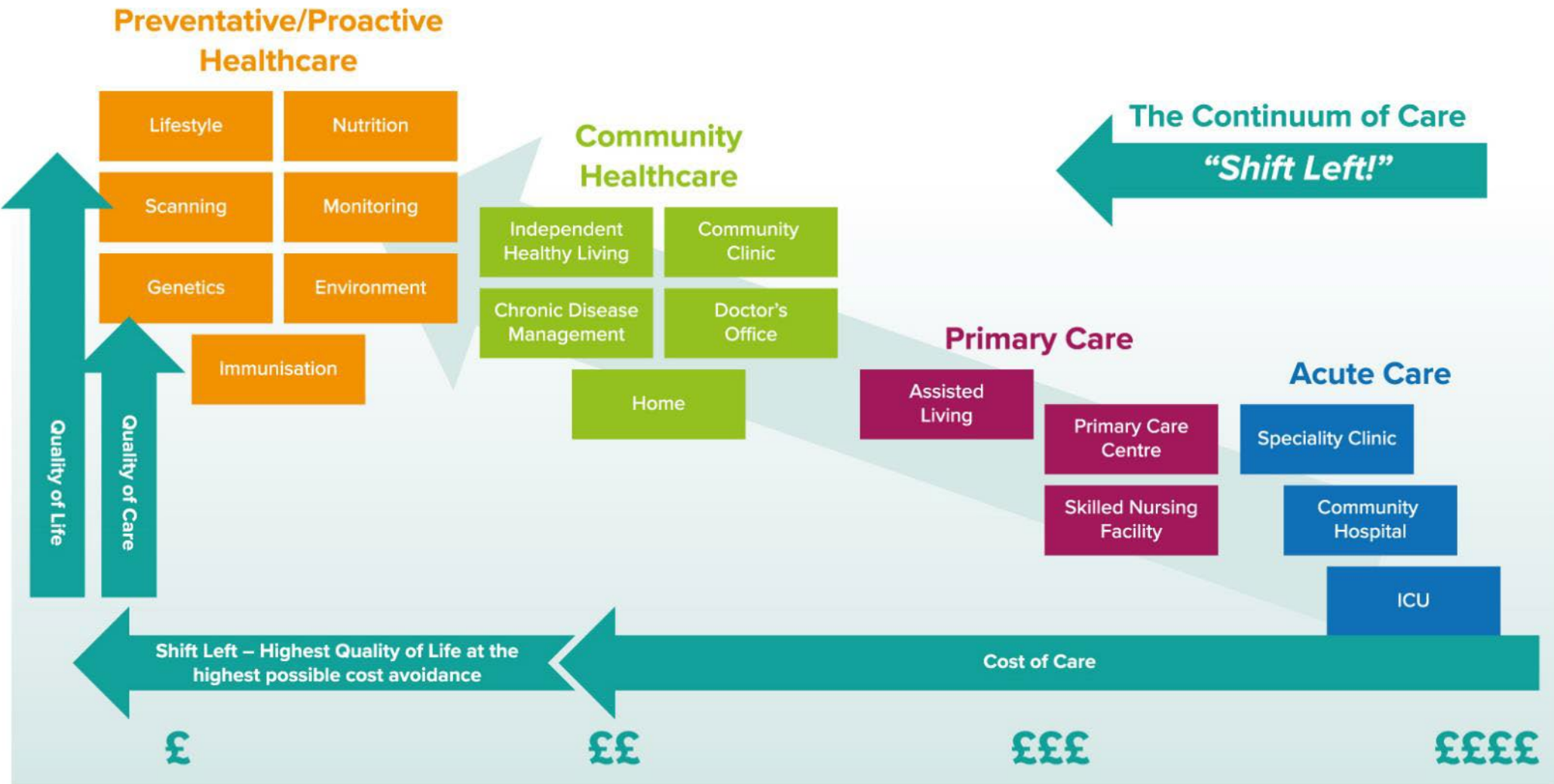
Impact

- Provide funding into the community
- Reduce hospital and GP visits
- Improve patient experience
- Translate **engineering & physical sciences healthcare research** outputs into products, in collaboration with industry

Accelerator

- Improve and spread understanding of regulatory pathway
- Work with existing MedTech companies and products
- Connect people

The problem we're solving



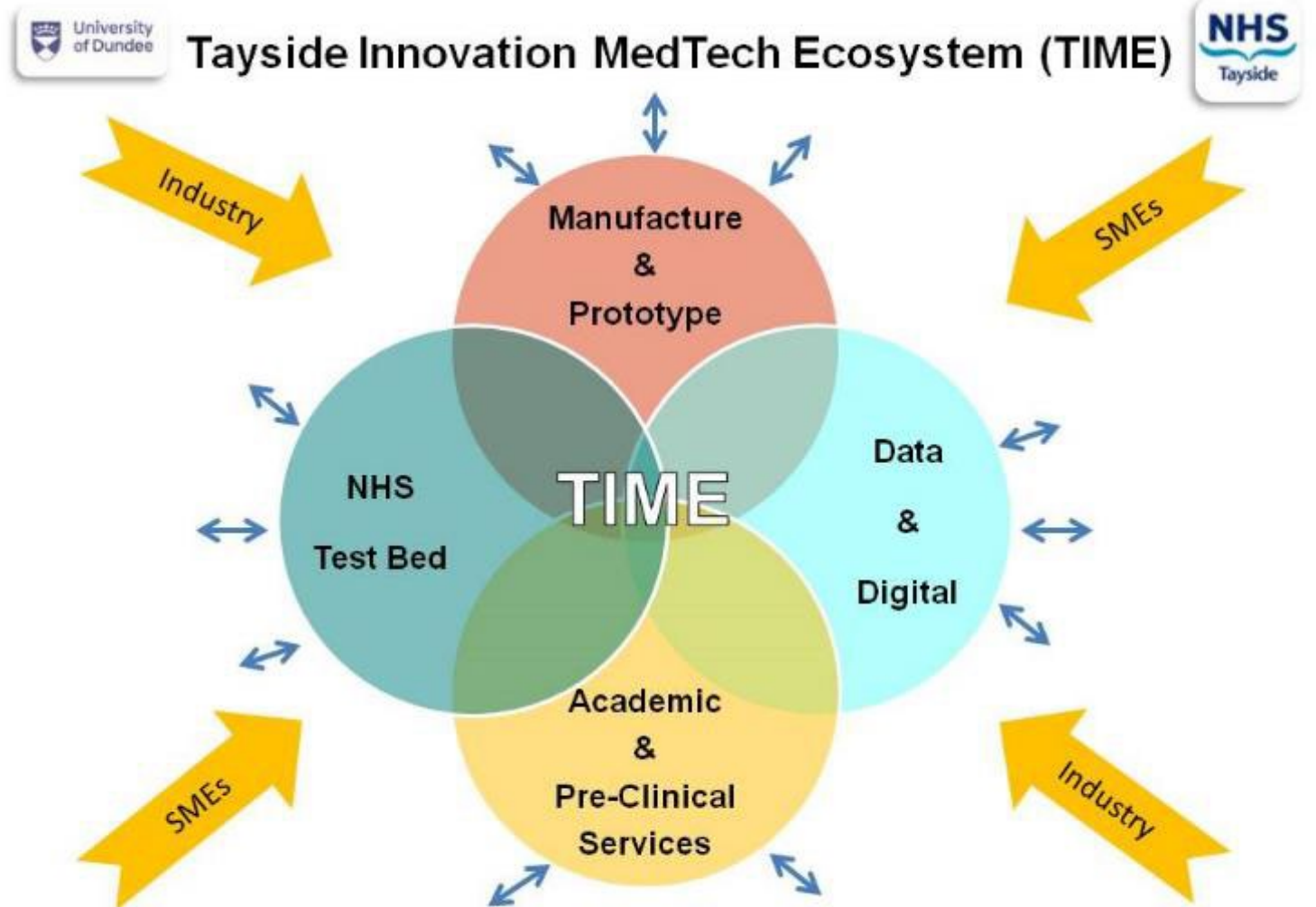
Strategic Partnerships – Eligible partners



Strategic Partnerships



&



Strategic Partnerships



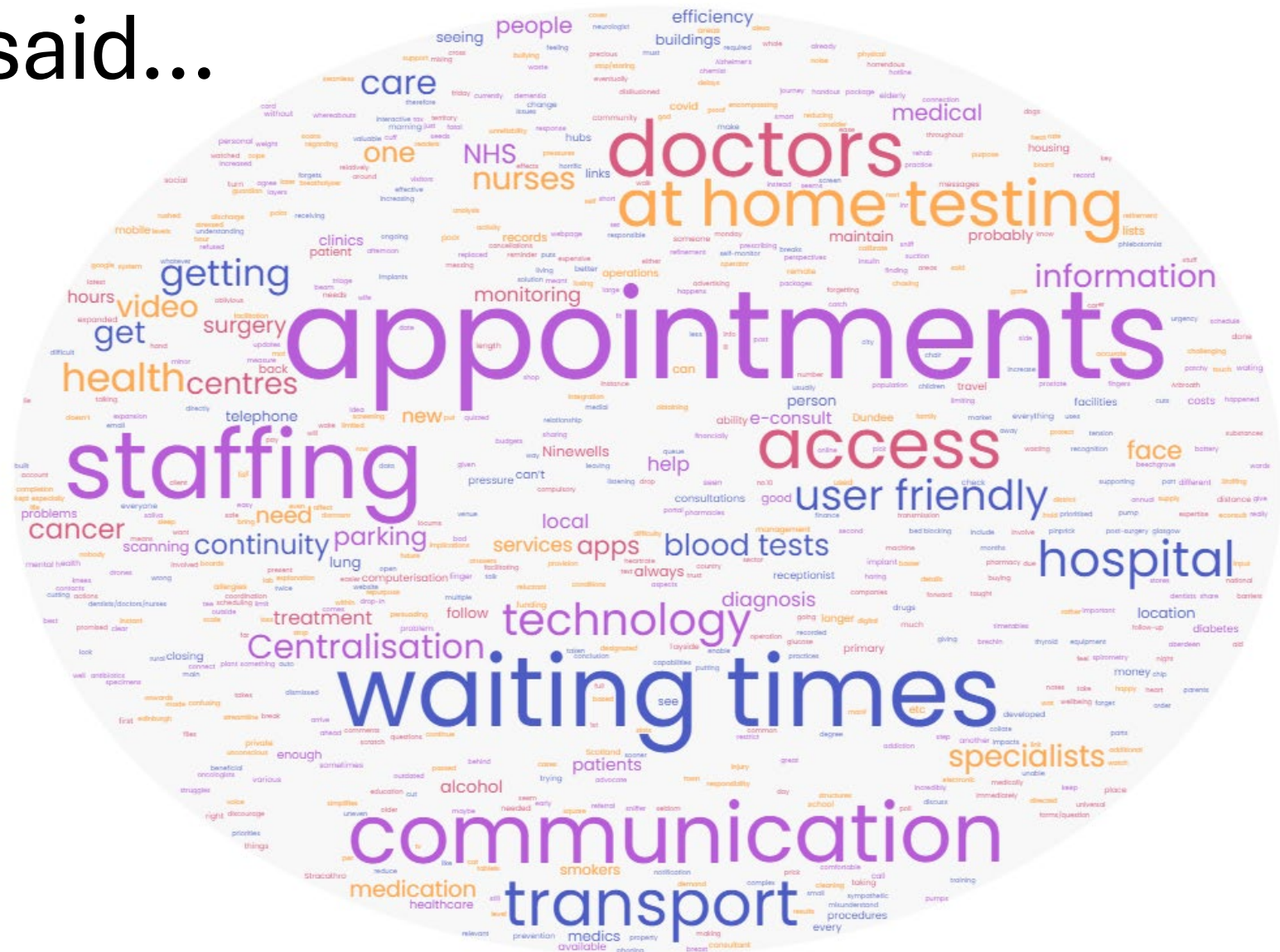
University of
St Andrews



4 PPIE Workshops and 1 HCP Workshop

	Who	Health issue	Topic
Perthshire	Retired rural, more affluent	Any	Digital health/ remote monitoring
Angus	All adults, Lowest 30% SIMD	Any	Digital health/ remote monitoring
Perth	All adults	Chronic conditions	Bringing hospital to local clinics
Dundee	All adults	Substance use	Access to healthcare
Online	H&SC staff	n/a	Open

Patients said...



Grand Challenges

- Open to Tay Health Tech consortium only
- One call, £996,000
- Large (up to £175K) and small (up to £50K) projects
- All projects to align to at least one of the four challenges
- Details of challenges in call online



Hospital at Home



Rehabilitation and Prehabilitation



Testing



Prevention and Prognostics

What are we looking for?



- Existing medical technologies
- Evidence of direct benefit to Tayside
- Evidence of reduction of health inequalities
- Public and Patient Involvement & Engagement
- EDI-considered approach to PPIE, data collection and analysis
- ~TRL 4 and above
- Partnership with health and care professionals



- Top-up funding of existing research proposals staying within TRL1-3
- Research proposals *per se*
- Indirect or secondary benefit to Tayside

+

•

○

Costs Eligibility



- Researcher salary
- Consumables
- Travel
- PPIE activities
- Expert consultants



- Academic/Consultant salary
- Collaborator staffing
- Overheads, indirect costs, estates costs
- Academic publication costs
- Conference fees
- IP and patent costs
- Studentships and KTPs

For the full list, please check online

Review process



On receipt of application

Tay Health Tech team checks eligibility



17 Feb

List of organisations sent to reviewers to declare Conflict of Interest



20 Feb

Applications sent to multiple reviewers (without applicant and EDI data)



13 Mar

Meeting to discuss applications

- Reviewers introduce their applications to the group
- **Portfolio approach taken**, Project Manager monitors organisations and themes covered



Mid-March

Applicants receive decisions

Finding Collaborators

If there's a gap in your project team, can we help?



Q&A

Use the chat to ask your question, or raise your digital hand

New questions and answers will be added to the FAQs online



Mohamed Hassan, Pixabay



Chartered Society of Physiotherapy



Diabetes UK



Next steps

Webinar: 28 January

- Potential collaborations and consideration for your projects

Deadline: 17 February, 1pm



TayHealthTech.org.uk



TayHealthTech@hw.ac.uk



[@TayHealthTech](https://www.linkedin.com/company/TayHealthTech)